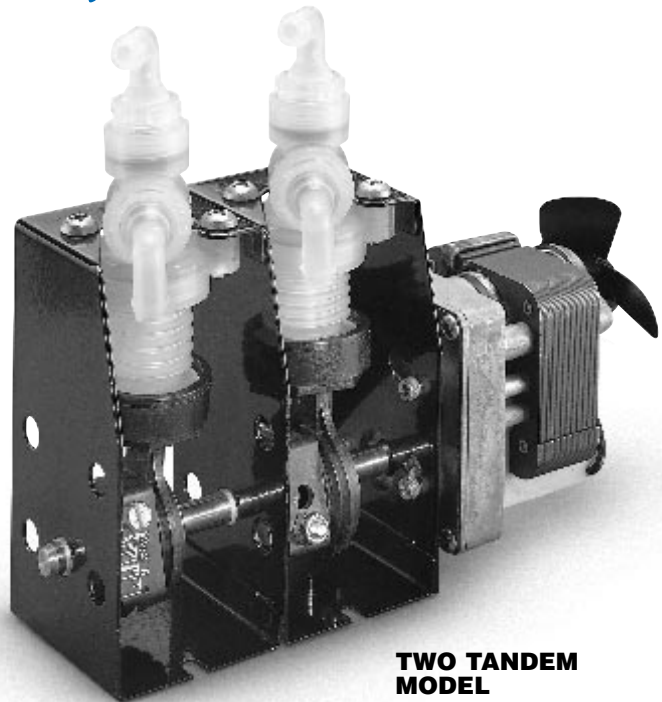
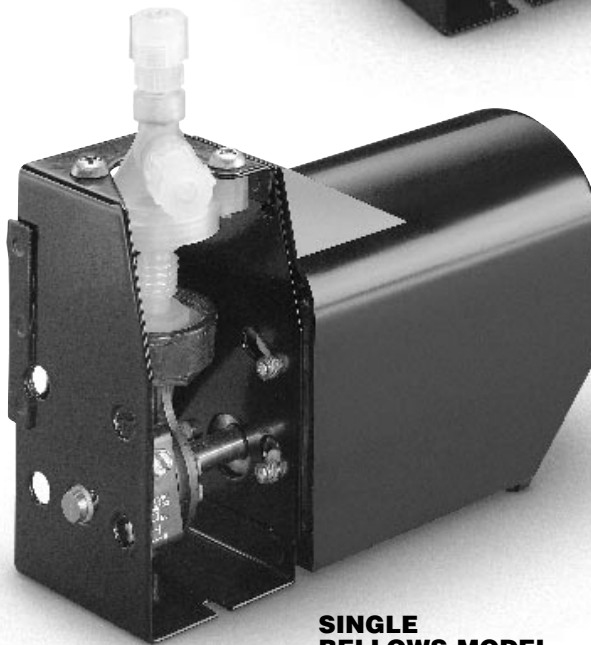


# Compact Bellows *Pumps*

Compact models were designed for applications with low pressure requirements. Maximum discharge pressure to 5 psi. Pumps are only available with the standard crank mechanism. Pumps with up to 4 bellows modules are available. Flow rate of each bellows module is independently adjustable.



**TWO TANDEM  
MODEL**



**SINGLE  
BELLOWS MODEL  
WITH COVER**

## Features:

- Average repeatability from stroke-to-stroke,  $\pm 0.75\%$
- Dry run capability
- Self-priming
- No dynamic seals
- Superior corrosion resistance
- Economical
- Simple flow adjustment

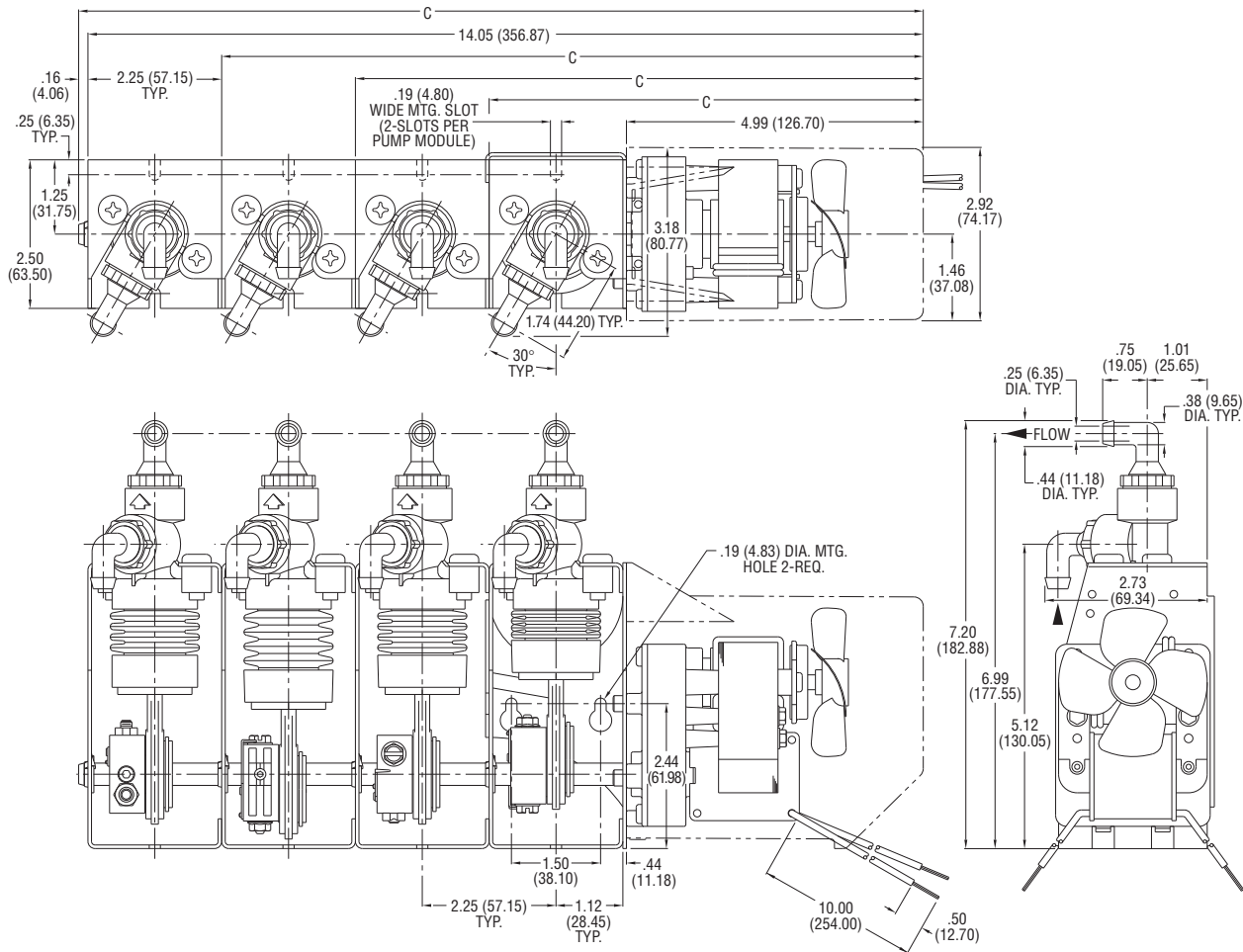
## Pump Specifications:

Average Repeatability —	From stroke-to stroke $\pm 0.75\%$
Flow Rates —	To 1620 ml/min
Discharge Pressure —	To 5 psi
Fluid Temperature —	To 140°F (60°C)

## Gearmotors:

Standard gearmotors available in 115V, 50/60 Hz and 230V, 50/60 Hz. Standard motor speeds are 45.6 and 90 RPM at 60 Hz and 38 and 75 RPM at 50 Hz. Motors are UL listed and continuous duty rated. Some 50 Hz applications may not have a continuous duty rating (consult factory for details).

# COMPACT BELLOWS PUMPS - TYPICAL DIMENSIONS



DIMENSION C						
Model	Without Cover				With Cover	Weight
	45.6 RPM		90 RPM			
	115V	230V	115V	230V		
Single	6.04 (153.4)	6.04 (153.4)	6.54 (166.1)	6.79 (172.4)	7.30 (185.4)	3.61 lbs.
2-Tandem	8.29 (210.5)	8.29 (210.5)	8.79 (223.2)	9.04 (229.6)	9.55 (242.6)	4.33 lbs.
3-Tandem	10.54 (267.7)	10.54 (267.7)	11.04 (280.4)	11.29 (286.7)	11.80 (299.7)	4.98 lbs.
4-Tandem	12.95 (328.9)	12.95 (328.9)	13.45 (341.6)	13.70 (348.0)	14.21 (360.9)	5.94 lbs.

Note: Dimensions include .16" bearing extension.

Dimensions in Inches  
(Dimensions in Millimeters)