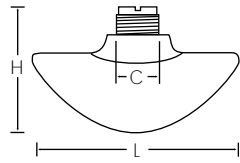


# +GF+ SIGNET Plastic Installation Fittings

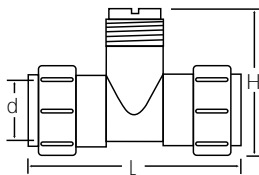
## Fiberglass Glue-on Saddles



| Part no. | Code        | Size     | L    | H   | o.d.  | C     |
|----------|-------------|----------|------|-----|-------|-------|
| FPS030   | 159 000 441 | 3.00 in. | 5.9  | 4.5 | 3.50  | 1.438 |
| FPS040   | 159 000 442 | 4.00 in. | 8.0  | 4.5 | 4.50  | 1.438 |
| FPS060   | 159 000 443 | 6.00 in. | 8.0  | 6.5 | 6.62  | 2.25  |
| FPS080   | 198 801 417 | 8.00 in. | 10.0 | 8.0 | 8.62  | 2.25  |
| FPS100   | 159 000 444 | 10.0 in. | 12.0 | 8.5 | 10.75 | 2.25  |
| FPS120   | 159 000 445 | 12.0 in. | 12.0 | 8.5 | 12.75 | 2.25  |

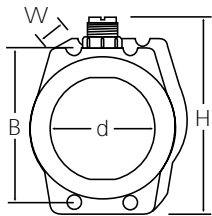
- C - Clearance dimension
- Up to 8 in. - PVDF insert, over 8 in. - PVC
- Mounts on fiberglass pipe

## Metric PP Union Tee Fittings



| Part no. | Code        | DN    | L   | H   | d  |
|----------|-------------|-------|-----|-----|----|
| PPMT005  | 198 150 522 | 15 mm | 128 | 97  | 20 |
| PPMT007  | 198 150 523 | 20 mm | 142 | 105 | 25 |
| PPMT010  | 198 150 524 | 25 mm | 156 | 110 | 32 |
| PPMT012  | 198 150 525 | 32 mm | 160 | 120 | 40 |
| PPMT015  | 198 150 526 | 40 mm | 176 | 130 | 50 |
| PPMT020  | 198 150 527 | 50 mm | 194 | 146 | 63 |

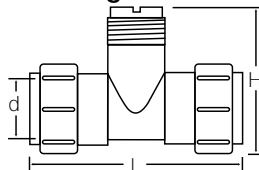
## Metric PP Wafer Fittings



| Part no. | Code        | DN     | W  | H   | d   | B   |
|----------|-------------|--------|----|-----|-----|-----|
| PPMT025  | 198 150 560 | 65 mm  | 46 | 175 | 75  | 142 |
| PPMT030  | 198 150 561 | 80 mm  | 49 | 194 | 90  | 160 |
| PPMT040  | 198 150 562 | 100 mm | 56 | 220 | 110 | 186 |
| PPMT050  | 198 150 563 | 125 mm | 64 | 265 | 140 | 215 |
| PPMT060  | 198 150 564 | 150 mm | 70 | 297 | 160 | 240 |
| PPMT080  | 198 150 565 | 200 mm | 71 | 352 | 225 | 297 |

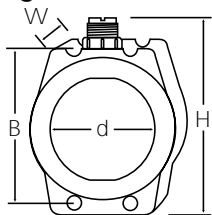
- Not compatible with 8000 series transmitters

## Metric PVDF Union Tee Fittings



| Part no. | Code        | DN    | L   | H   | d  |
|----------|-------------|-------|-----|-----|----|
| SFMT005  | 198 150 529 | 15 mm | 128 | 97  | 20 |
| SFMT007  | 198 150 530 | 20 mm | 142 | 105 | 25 |
| SFMT010  | 198 150 531 | 25 mm | 156 | 110 | 32 |
| SFMT012  | 198 150 532 | 32 mm | 160 | 120 | 40 |
| SFMT015  | 198 150 533 | 40 mm | 176 | 130 | 50 |
| SFMT020  | 198 150 534 | 50 mm | 194 | 146 | 63 |

## Metric PVDF Wafer Fittings

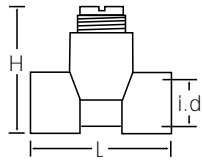


| Part no. | Code        | DN     | W  | H   | d   | B   |
|----------|-------------|--------|----|-----|-----|-----|
| SFMT025  | 198 150 571 | 65 mm  | 46 | 175 | 75  | 142 |
| SFMT030  | 198 150 697 | 80 mm  | 49 | 194 | 90  | 160 |
| SFMT040  | 198 150 573 | 100 mm | 56 | 220 | 110 | 186 |
| SFMT050  | 198 150 574 | 125 mm | 64 | 265 | 140 | 215 |
| SFMT060  | 198 150 575 | 150 mm | 70 | 297 | 160 | 240 |
| SFMT080  | 198 150 576 | 200 mm | 71 | 352 | 225 | 297 |

- Not compatible with 8000 series transmitters

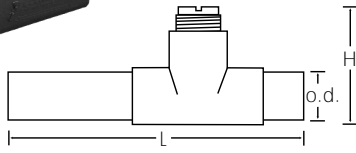
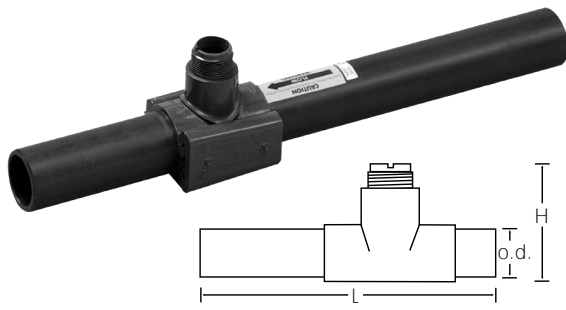
# +GF+ SIGNET Plastic Installation Fittings

## PVC TEES SCH 80 - Fitting only



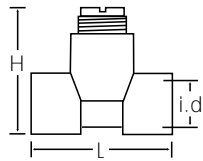
| Part no. | Code        | Size     | L    | H   | i.d. |
|----------|-------------|----------|------|-----|------|
| PV8T005F | 159 000 527 | 0.50 in. | 3.75 | 3.6 | .85  |
| PV8T007F | 159 000 529 | 0.75 in. | 3.75 | 3.8 | 1.06 |
| PV8T010F | 159 000 531 | 1.00 in. | 4.26 | 4.0 | 1.33 |
| PV8T012F | 159 000 533 | 1.25 in. | 4.36 | 4.4 | 1.67 |
| PV8T015F | 159 000 535 | 1.50 in. | 4.90 | 4.6 | 1.91 |

## PVC TEES SCH 80 - With Pipe



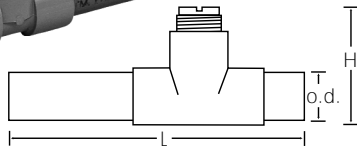
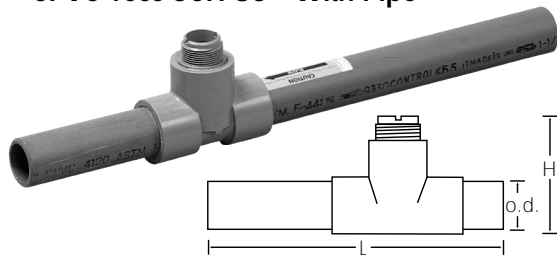
| Part no. | Code        | Size     | L  | H   | o.d.  |
|----------|-------------|----------|----|-----|-------|
| PV8T005  | 159 000 526 | 0.50 in. | 14 | 3.6 | 0.840 |
| PV8T007  | 159 000 528 | 0.75 in. | 14 | 3.8 | 1.050 |
| PV8T010  | 159 000 530 | 1.00 in. | 17 | 4.0 | 1.315 |
| PV8T012  | 159 000 532 | 1.25 in. | 20 | 4.4 | 1.660 |
| PV8T015  | 159 000 534 | 1.50 in. | 24 | 4.6 | 1.900 |
| PV8T020  | 198 801 415 | 2.00 in. | 24 | 5.0 | 2.375 |
| PV8T025  | 198 801 573 | 2.50 in. | 24 | 5.4 | 2.875 |
| PV8T030  | 198 801 416 | 3.00 in. | 24 | 6.0 | 3.500 |
| PV8T040  | 198 801 436 | 4.00 in. | 24 | 7.0 | 4.500 |

## CPVC Tees SCH 80 - Fitting only



| Part no.  | Code        | Size     | L    | H   | i.d. |
|-----------|-------------|----------|------|-----|------|
| CPV8T005F | 159 000 409 | 0.50 in. | 3.75 | 3.6 | .85  |
| CPV8T007F | 159 000 411 | 0.75 in. | 3.75 | 3.8 | 1.06 |
| CPV8T010F | 159 000 413 | 1.00 in. | 4.26 | 4.0 | 1.33 |
| CPV8T012F | 159 000 415 | 1.25 in. | 4.36 | 4.4 | 1.67 |
| CPV8T015F | 159 000 417 | 1.50 in. | 4.90 | 4.6 | 1.91 |

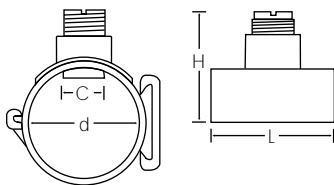
## CPVC Tees SCH 80 - With Pipe



| Part no. | Code        | Size     | L  | H   | o.d.  |
|----------|-------------|----------|----|-----|-------|
| CPV8T005 | 159 000 408 | 0.50 in. | 14 | 3.6 | 0.840 |
| CPV8T007 | 159 000 410 | 0.75 in. | 14 | 3.8 | 1.050 |
| CPV8T010 | 159 000 412 | 1.00 in. | 17 | 4.0 | 1.315 |
| CPV8T012 | 159 000 414 | 1.25 in. | 20 | 4.4 | 1.660 |
| CPV8T015 | 159 000 416 | 1.50 in. | 24 | 4.6 | 1.900 |

- Mounts on SCH 80 CPVC pipe

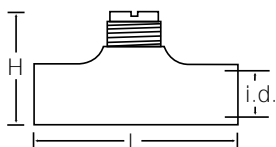
## PVC Glue-on Saddles



| Part no. | Code        | Size     | L    | H    | d     | C    |
|----------|-------------|----------|------|------|-------|------|
| PV8S020  | 159 000 637 | 2.00 in. | 4.00 | 5.0  | 2.375 | 1.43 |
| PV8S025  | 159 000 638 | 2.50 in. | 4.75 | 5.4  | 2.875 | 1.43 |
| PV8S030  | 198 150 577 | 3.00 in. | 5.00 | 6.0  | 3.500 | 1.43 |
| PV8S040  | 198 150 578 | 4.00 in. | 5.00 | 7.0  | 4.500 | 1.43 |
| PV8S060  | 198 150 579 | 6.00 in. | 5.00 | 10.0 | 6.625 | 2.25 |
| PV8S080  | 159 000 639 | 8.00 in. | 5.00 | 11.5 | 8.625 | 2.25 |

- Mounts on SCH 80 PVC pipe
- C - Clearance dimension

## Fiberglass Glue-on Tees

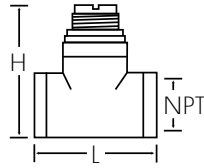


| Part no. | Code        | Size     | L   | H   | i.d.  |
|----------|-------------|----------|-----|-----|-------|
| FPT015   | 159 000 446 | 1.50 in. | 5.5 | 4.7 | 1.92  |
| FPT020   | 159 000 447 | 2.00 in. | 7.7 | 8.0 | 2.375 |

- PVDF insert - all sizes
- Mounts on fiberglass pipe

# +GF+ SIGNET Metal Installation Fittings

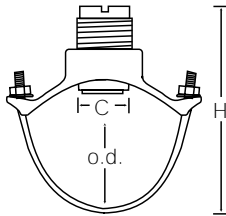
## Galvanized Iron/Brass Threaded Tee with NPT Threads



| Part no. | Code        | Size     | NPT  | L    | H    |
|----------|-------------|----------|------|------|------|
| IR4TO10  | 159 000 448 | 1.00 in. | 1.0  | 3.4  | 4.1  |
| IR4TO12  | 159 000 449 | 1.25 in. | 1.25 | 3.56 | 4.34 |
| IR4TO15  | 159 000 450 | 1.50 in. | 1.50 | 3.75 | 4.67 |
| IR4TO20  | 159 000 451 | 2.00 in. | 2.0  | 3.90 | 5.05 |
| BR4TO10  | 159 000 642 | 1.00 in. | 1.0  | 3.36 | 2.40 |
| BR4TO12  | 159 000 643 | 1.25 in. | 1.25 | 3.42 | 2.67 |
| BR4TO15  | 159 000 644 | 1.50 in. | 1.50 | 3.46 | 2.97 |
| BR4TO20  | 159 000 645 | 2.00 in. | 2.0  | 3.68 | 3.53 |

- PVDF insert - all sizes
- Mounts on SCH 40 metal pipe

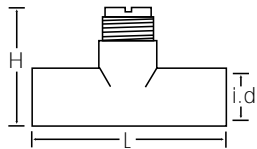
## Iron Strap-on Saddle



| Part no. | Code        | Size     | H    | o.d min | o.d. max | C     |
|----------|-------------|----------|------|---------|----------|-------|
| IR8S020  | 159 000 452 | 2.00 in. | 5.5  | 2.35    | 2.56     | 1.438 |
| IR8S025  | 159 000 453 | 2.50 in. | 5.5  | 2.44    | 2.91     | 1.438 |
| IR8S030  | 159 000 454 | 3.00 in. | 6.5  | 2.97    | 3.54     | 1.438 |
| IR8S040  | 198 801 420 | 4.00 in. | 7.5  | 3.74    | 4.55     | 1.438 |
| IR8S050  | 159 000 455 | 5.00 in. | 9.0  | 4.74    | 5.63     | 2.25  |
| IR8S060  | 159 000 456 | 6.00 in. | 10.5 | 5.94    | 6.70     | 2.25  |
| IR8S080  | 159 000 457 | 8.00 in. | 12.0 | 7.69    | 8.72     | 2.25  |
| IR8S100  | 198 801 432 | 10.0 in. | 18.0 | 10.64   | 12.12    | 2.25  |
| IR8S120  | 159 000 458 | 12.0 in. | 20.0 | 12.62   | 14.32    | 2.25  |

- C - Clearance dimension
- Up to 8 in. - PVDF insert, over 8 in. - PVC

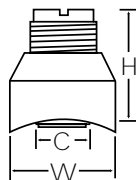
## Copper/Bronze Sweat-on Tee



| Part no. | Code        | Size     | L    | H    | i.d.  |
|----------|-------------|----------|------|------|-------|
| CUKT005  | 159 000 436 | 0.50 in. | 3.15 | 3.57 | 0.617 |
| CUKT007  | 159 000 437 | 0.75 in. | 2.96 | 3.52 | 0.871 |
| CUKT010  | 159 000 438 | 1.00 in. | 3.23 | 3.80 | 1.124 |
| CUKT012  | 159 000 439 | 1.25 in. | 4.16 | 4.12 | 1.378 |
| CUKT015  | 159 000 440 | 1.50 in. | 4.43 | 4.34 | 1.627 |
| CUKT020  | 198 801 418 | 2.00 in. | 5.31 | 4.86 | 2.112 |

- No insert up to 1 in., over 1 in. - PVDF
- Mounts on copper pipe (Sch 40)
- Other schedules available upon request

## Copper/Bronze Braze-on Brazolet

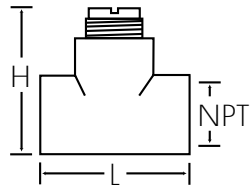


| Part no. | Code        | Size     | W    | H    | C     |
|----------|-------------|----------|------|------|-------|
| BR4B025  | 159 000 396 | 2.5 in.  | 2.50 | 2.96 | 1.438 |
| BR4B030  | 159 000 397 | 3.0 in.  | 2.55 | 2.90 | 1.438 |
| BR4B040  | 159 000 398 | 4.0 in.  | 2.50 | 2.75 | 1.438 |
| BR4B050  | 159 000 399 | 5.0 in.  | 3.50 | 3.98 | 2.25  |
| BR4B060  | 159 000 400 | 6.0 in.  | 3.50 | 4.00 | 2.25  |
| BR4B080  | 159 000 401 | 8.0 in.  | 3.50 | 4.00 | 2.25  |
| BR4B100  | 159 000 402 | 10.0 in. | 3.50 | 4.00 | 2.25  |
| BR4B120  | 159 000 403 | 12.0 in. | 3.50 | 7.00 | 2.25  |

- C - Clearance dimension
- Up to 8 in. - PVDF insert, over 8 in. - PVC insert
- Mounts on copper pipe

# +GF+ SIGNET Metal Installation Fittings

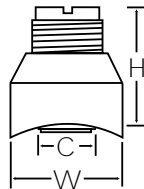
## Carbon Steel Threaded Tees with NPT Threads



| Part no. | Code        | Size (NPT) | L   | H   |
|----------|-------------|------------|-----|-----|
| CS4T005  | 159 000 429 | 0.50 in.   | 3.6 | 4.0 |
| CS4T007  | 159 000 430 | 0.75 in.   | 3.6 | 4.2 |
| CS4T010  | 159 000 431 | 1.00 in.   | 3.6 | 4.2 |
| CS4T012  | 159 000 432 | 1.25 in.   | 3.8 | 4.5 |
| CS4T015  | 198 801 419 | 1.50 in.   | 4.1 | 4.8 |
| CS4T020  | 159 000 433 | 2.00 in.   | 4.9 | 5.3 |

- PVDF insert - all sizes
- Mounts on SCH 40 metal pipe

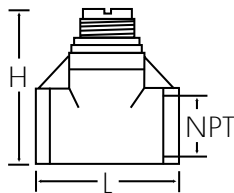
## Carbon Steel Weld-on Weldolets



| Part no. | Code        | Size     | H    | W    | C     |
|----------|-------------|----------|------|------|-------|
| CS4W025  | 159 000 434 | 2.50 in. | 2.96 | 2.50 | 1.438 |
| CS4W030  | 198 801 557 | 3.00 in. | 2.90 | 2.55 | 1.438 |
| CS4W040  | 198 801 552 | 4.00 in. | 2.75 | 2.50 | 1.438 |
| CS4W050  | 159 000 435 | 5.00 in. | 3.98 | 3.50 | 2.25  |
| CS4W060  | 198 801 553 | 6.00 in. | 4.00 | 3.50 | 2.25  |
| CS4W080  | 198 801 574 | 8.00 in. | 4.00 | 3.50 | 2.25  |
| CS4W100  | 198 801 575 | 10.0 in. | 4.00 | 3.50 | 2.25  |
| CS4W120  | 198 801 576 | 12.0 in. | 7.00 | 3.50 | 2.25  |

- Up to 8 in.- PVDF insert, over 8 in. - PVC
- Mounts on SCH 40 metal pipe (Special order over 12 in.)
- C - Clearance dimension

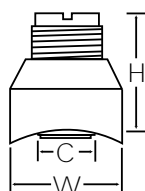
## 316 SS Threaded Tees with NPT Threads



| Part no. | Code        | Size (NPT) | L   | H   |
|----------|-------------|------------|-----|-----|
| CR4T005  | 198 801 554 | 0.50 in.   | 3.6 | 4.0 |
| CR4T007  | 198 801 555 | 0.75 in.   | 3.6 | 4.2 |
| CR4T010  | 198 801 556 | 1.00 in.   | 3.6 | 4.2 |
| CR4T012  | 159 000 418 | 1.25 in.   | 3.8 | 4.5 |
| CR4T015  | 198 801 784 | 1.50 in.   | 4.1 | 4.8 |
| CR4T020  | 159 000 420 | 2.00 in.   | 4.9 | 5.3 |

- PVDF insert - all sizes
- Mounts on SCH 40 metal pipe

## 316 SS Weld-on Weldolets

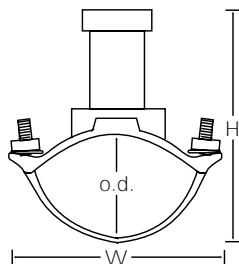


| Part no. | Code        | Size     | H    | W    | C     |
|----------|-------------|----------|------|------|-------|
| CR4W025  | 159 000 421 | 2.50 in. | 2.96 | 2.50 | 1.438 |
| CR4W030  | 198 801 787 | 3.00 in. | 2.90 | 2.55 | 1.438 |
| CR4W040  | 198 801 788 | 4.00 in. | 2.50 | 2.75 | 1.438 |
| CR4W050  | 159 000 424 | 5.00 in. | 3.98 | 3.50 | 2.25  |
| CR4W060  | 198 801 790 | 6.00 in. | 4.00 | 3.50 | 2.25  |
| CR4W080  | 198 801 791 | 8.00 in. | 4.00 | 3.50 | 2.25  |
| CR4W100  | 198 901 792 | 10.0 in. | 4.00 | 3.50 | 2.25  |
| CR4W120  | 198 801 793 | 12.0 in. | 7.00 | 3.50 | 2.25  |

- Up to 8 in. - PVDF insert, over 8 in. - PVC
- Mounts on SCH 40 metal pipe
- C - Clearance dimension

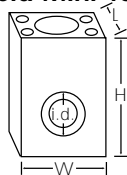
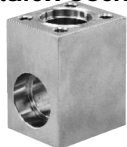
# +GF+ SIGNET Metal Installation Fittings

## Metalex Strap-On Saddle max



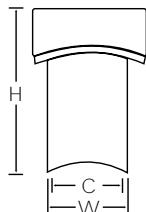
| Part no.  | Code        | Size     | H     | W    | o.d. min | o.d.  |
|-----------|-------------|----------|-------|------|----------|-------|
| P526-1020 | 159 000 484 | 2.00 in. | 7.0   | 5.5  | 2.35     | 2.56  |
| P526-1025 | 159 000 485 | 2.50 in. | 7.0   | 5.5  | 2.44     | 2.91  |
| P526-1030 | 159 000 486 | 3.00 in. | 7.5   | 6.0  | 2.97     | 3.54  |
| P526-1040 | 159 000 487 | 4.00 in. | 8.0   | 7.0  | 3.74     | 4.55  |
| P526-1050 | 159 000 488 | 5.00 in. | 10.0  | 8.0  | 4.74     | 5.63  |
| P526-1060 | 159 000 489 | 6.00 in. | 10.5  | 9.5  | 5.94     | 6.70  |
| P526-1080 | 159 000 490 | 8.00 in. | 12.75 | 12.0 | 7.69     | 8.72  |
| P526-1100 | 159 000 491 | 10.0 in. | 14.5  | 15.0 | 10.64    | 12.12 |
| P526-1120 | 159 000 492 | 12.0 in. | 17.0  | 17.0 | 12.62    | 14.32 |

## Metalex Socket Weld Mini-Tap



| Part no.  | Code        | Size     | L   | H   | W   | i.d.  |
|-----------|-------------|----------|-----|-----|-----|-------|
| P526-2005 | 198 840 501 | 0.50 in. | 2.0 | 3.0 | 2.4 | 0.850 |
| P526-2007 | 198 840 502 | 0.75 in. | 2.0 | 3.0 | 2.4 | 1.060 |
| P526-2010 | 198 840 503 | 1.00 in. | 2.0 | 3.0 | 2.4 | 1.325 |

## Metalex Weld-On Mini-Tap



| Part no.  | Code        | Size     | H    | W    | C     |
|-----------|-------------|----------|------|------|-------|
| P526-2012 | 159 000 494 | 1.25 in. | 2.25 | 1.66 | 1.062 |
| P526-2015 | 198 840 506 | 1.50 in. | 2.20 | 1.66 | 1.062 |
| P526-2020 | 159 000 495 | 2.00 in. | 2.17 | 1.66 | 1.062 |
| P526-2025 | 159 000 496 | 2.50 in. | 2.10 | 1.66 | 1.062 |
| P526-2030 | 159 000 497 | 3.00 in. | 2.0  | 1.66 | 1.062 |
| P526-2040 | 159 000 498 | 4.00 in. | 1.95 | 1.66 | 1.062 |
| P526-2050 | 159 000 499 | 5.00 in. | 1.83 | 1.66 | 1.062 |
| P526-2060 | 159 000 500 | 6.00 in. | 1.75 | 1.66 | 1.062 |
| P526-2080 | 159 000 501 | 8.00 in. | 1.56 | 1.66 | 1.062 |
| P526-2100 | 159 000 502 | 10.0 in. | 1.35 | 1.66 | 1.062 |
| P526-2120 | 159 000 503 | 12.0 in. | 1.15 | 1.66 | 1.062 |

## Fitting Accessories

| Part no.     | Code        | Description               |
|--------------|-------------|---------------------------|
| P31515-0V200 | 159 000 459 | Pipe Adapter Insert, PVDF |
| P31515-0C200 | 159 000 631 | Pipe Adapter Insert, CPVC |
| P31515-0P200 | 159 000 630 | Pipe Adapter Insert, PVC  |
| P315520-1V   | 159 000 460 | Pipe Adapter Insert       |
| P31520-2P    | 159 000 461 | Pipe Adapter Insert       |
| P31536       | 198 840 201 | Sensor Plug, Polypro      |
| P31536-2     | 159 000 649 | Sensor Plug, PVDF         |
| P31671-1     | 159 000 465 | Insert, PVDF 1.5 in.      |



**FOR YOUR SAFETY:** Always confirm the chemical compatibility and the maximum pressure/temperature specifications for fitting and sensor selection prior to purchase. Failure to do so may result in property damage and/or serious personal injury.